



LINGUISTIC DISCOVERY

DARTMOUTH COLLEGE

Volume 8
Issue 1
2010

Semantic Map Geometry: Two Approaches

Joost Zwarts

Utrecht Institute of Linguistics OTS

doi: 10.1349/PS1.1537-0852.A.357

url: <http://journals.dartmouth.edu/cgi-bin/WebObjects/Journals.woa/1/xmlpage/1/article/357>

Linguistic Discovery

Published by the Dartmouth College Library
Copyright to this article is held by the authors.

ISSN 1537-0852

linguistic-discovery.dartmouth.edu

Semantic Map Geometry: Two Approaches

Joost Zwarts

Utrecht Institute of Linguistics OTS

This paper discusses two ways in which the geometry of a semantic map can be defined: on the basis of a set of cross-linguistic data or on the basis of a semantic analysis of the meanings involved. I will argue that under a purely “data-driven” approach certain important aspects of contiguity in semantic maps, like exceptions and family resemblance structure, remain unclear and that we can get more insight into these aspects when working from a semantically defined geometry. The two approaches can complement each other in the use of semantic maps.

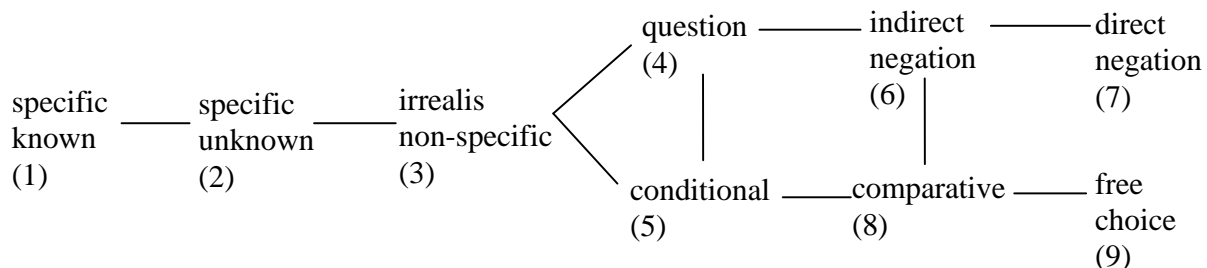
A semantic map is a “spatial” representation of the ways in which a set of linguistic meanings hangs together. More similar meanings are closer together on the map, while less similar meanings are further apart. Underlying the spatial representation is a particular geometry that defines how similarities correspond to spatial distances or connections, either in graphs or in MDS. This paper is about two different ways in which the geometry of a semantic map can be derived and applied, working from cross-linguistic data or working from a semantic model. Because these two approaches both have their limitations, it follows that they can complement, inform, and correct each other.

After a brief introduction to the notion of semantic maps in section 1, I will explain the two approaches in section 2 and some of the limitations and pitfalls in section 3 and section 4. Section 5 concludes the paper.

1. Semantic Map = Lexical Matrix + Conceptual Space

Building on earlier distinctions in Croft (2001) and Haspelmath (2003), I will assume that a *semantic map* for a particular domain consists of two parts: a *lexical matrix* and a *conceptual space*. A conceptual space is a geometrically ordered set of meanings, typically a graph, like Haspelmath’s (1997a) well-known space of indefinite meanings:

(1)



The lexical matrix in its simplest form is a table which shows for each word in a set of words (or grams) which meanings (or functions) from the conceptual space it can express. Here is a small fragment of the lexical matrix for indefinite pronouns in Haspelmath (1997a):

(2)	1	2	3	4	5	6	7	8	9
<i>somebody</i>	✓	✓	✓	✓	✓				
<i>nessuno</i>				✓		✓	✓		
<i>dhipote</i>					✓			✓	✓
<i>som helst</i>								✓	✓
...									

By projecting one or more of the words in (2) onto the conceptual structure in (1), we get a semantic map, a visualization of lexical semantic patterns.

I use the term “meaning” here in a general, loose sense, covering not only informal labels, as in (1), but also concrete stimuli (pictures or video clips, as in Majid et al. 2007) or even formal truth-conditional definitions (as in the Dalrymple et al. 1998 account of reciprocals). Also, the term “conceptual space” is not necessarily meant to imply here a cognitively realistic claim about the “geography of the human mind” (Croft 2001). It also applies to meaning spaces that are constructed without such pretensions. Furthermore, the terms “word” and “lexical” are intended to also include grammatical markers and categories (“grams”, like case markers or tenses). Finally, note that instead of a discrete graph, a conceptual space could also be a continuous similarity space, as in Levinson and Meira (2003), Majid et al. (2007), Croft and Poole (2008), and in much other work based on statistical scaling methods. The lexical matrix could contain quantitative information, e.g. how often a word is attested for a particular meaning. The important thing for a semantic map is that there is a structure of meanings (“spatially” ordered in some sense) that is related to a set of forms each expressing one or more of those meanings. Nevertheless, in this paper I will mostly focus on graph-based semantic mapping.

2. Two Mapping Approaches

The focus of this paper is not on the nature of the two semantic map components themselves, but rather on their *relationship* and in particular on the role of “geometry” in that relationship. We can distinguish two approaches. In one approach, the conceptual space is “induced” from the cross-linguistic lexical matrix in a more “data-driven” fashion. I will call this the *matrix-driven* approach. In the other approach, the conceptual space is defined independently off cross-linguistic data and then confronted with the lexical matrix. Let me call this the *space-driven* approach (for want of a better term). This can be seen as a more “deductive”, meaning-driven approach. Let me explain these two approaches in more detail.

2.1 Lexical matrix → Conceptual space

The matrix-driven approach is most common in semantic mapping in the work of Haspelmath (1997a, 1997b, 2003), Levinson and Meira (2003), Majid et al. (2007), Croft and Poole (2008), and Cysouw (2007). There are two methodologies for building a conceptual space on the basis of a matrix. One method is *graph-based*: it builds a discrete graph by connecting the meanings in the matrix with arcs as illustrated in (1) and (2). The other, more recent methodology is *scale-based*: using statistical methods it yields a continuous, two-dimensional Euclidian space in which

the meanings are represented as points. I will focus here on the graph-based version of this approach, using the example in (1) and (2), but the general idea of starting with the data and building a conceptual space applies to the scale-based approach as well.

Where the lines are drawn in (1) is entirely determined by the linguistic data in (2), without any consideration of what we might already know about the meanings themselves. The idea is, in fact, that we can learn how a set of meanings hangs together from what the words do. Note, however, that this approach still makes important analytical and theoretical assumptions about the number and kind of meanings to distinguish for a particular domain. The point is that, in principle, no assumptions are made about how these meanings *relate* to each other, i.e. how they are “geometrically” organized.

In the matrix-driven approach, a graph is constructed on the basis of an important principle called *contiguity* or *connectivity*. The task is to construct an undirected graph G in which every word in the lexical matrix covers a *connected subgraph* and in which, furthermore, G does not contain a subgraph G' in which this is also the case. So, we are looking for a graph of meanings that has as few links as possible while still guaranteeing connectivity for every word. In (1), through the connections between meanings 4 and 6 and between 6 and 7, the word *nessuno* covers a connected subgraph. However, a word with the meanings 3, 4, and 7 would not have connectivity in (1) because there is no arc between 3 or 4 on the one hand and 7 on the other hand. If we were to find such a word, then the graph would have to be extended with such an arc in order to ensure that there is a connected subgraph for the word with meanings {3, 4, 7}.

The graph in (1) embodies a claim as to which of the indefinite meanings 1 to 9 are closer to each other. “Specific known” is closer to “specific unknown” than to any other meaning, and it is quite far away from “direct negation”. Roughly speaking, this is because there are words including only meaning 1 and 2, but no word has been found including 1 and 7, without also including the meanings in between, more precisely, the meanings on a *path* leading from 1 to 7. We can define the *distance* between two meanings A and B in a graph as the length of the shortest path connecting A and B . So, in (1), the distance between meanings 1 and 7 is five arcs and the distance between 4 and 9 is three arcs.

The idea that distance in the conceptual space reflects similarity between meanings *as defined by the lexical matrix* is also found in the statistical approaches, as in the study of cutting and breaking verbs by Majid et al.: “Correspondence analysis produces a ‘semantic map’ that plots stimuli (here, the video clips) in a multidimensional space, with the distance between any two stimuli reflecting their degree of similarity (here, the degree to which speakers of various languages used the same verb to describe them), calculated across the data set as a whole,” (Majid et al. 2007:141). In such an approach, a word will also correspond to a contiguous area on the map. So, importantly, whether we arrive at a conceptual space through “correspondence analysis” or by drawing a graph, in both cases we derive the “geometric” structure entirely from the given lexical matrix.

2.2 Conceptual space → Lexical matrix

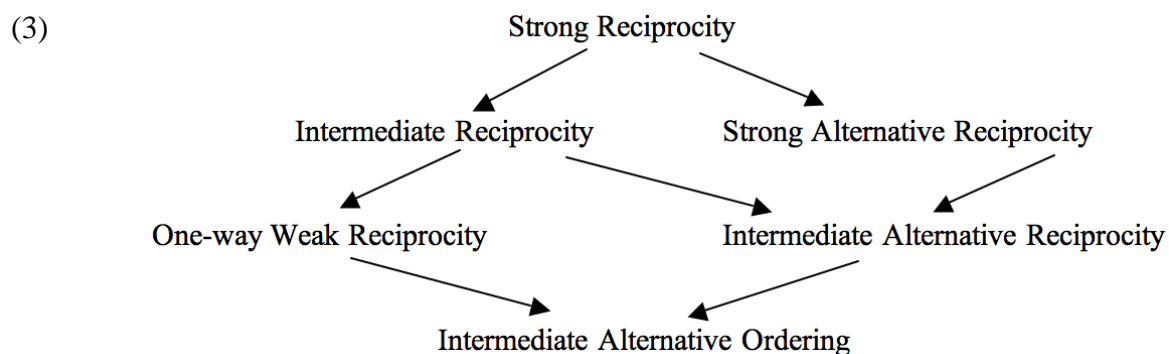
Instead of constructing a conceptual space from a lexical matrix, it is also possible to take an existing conceptual space and investigate how words are mapped onto it. The classic example of this approach is the study of color terms (from the seminal work by Berlin and Kay 1969 to recent work, Regier et al. 2007). The organization of color chips into a color space with its dimensions of hue, saturation, and brightness is not derived from color terms in languages across

the world, but independently defined on the basis of physical or psychological considerations, without taking into account how languages differentially name those values. We can then study how languages use words to carve up this color space, and we can test whether the terms are actually contiguous or *convex* in it. One of the central claims in Gärdenfors's (2000) theory of conceptual spaces is that color terms in fact correspond to convex regions. We can also study how the structure of the space determines other properties of color terms over and above convexity or connectivity, like organization around focal colors.

There are some other examples in the literature where a conceptual structure is given relatively independent of linguistic data. In the study of body part terminology, the human body already provides a partial geometry which is obviously relevant for the lexical patterns that we find. Kinship is another domain where a conceptual structure, based on notions like descent, gender, and marriage, can be constructed independently of various terminologies used for kin. In such a structure, the kinship type of "father" is closer to "father's brother" than to "mother's brother" under any conceptual analysis of these types. It is no surprise then that there are uncle terminologies that use the same term for "father" and "father's brother", excluding "mother's brother", but there are no terminologies in which "father" and "mother's brother" are taken together (Greenberg 1966).

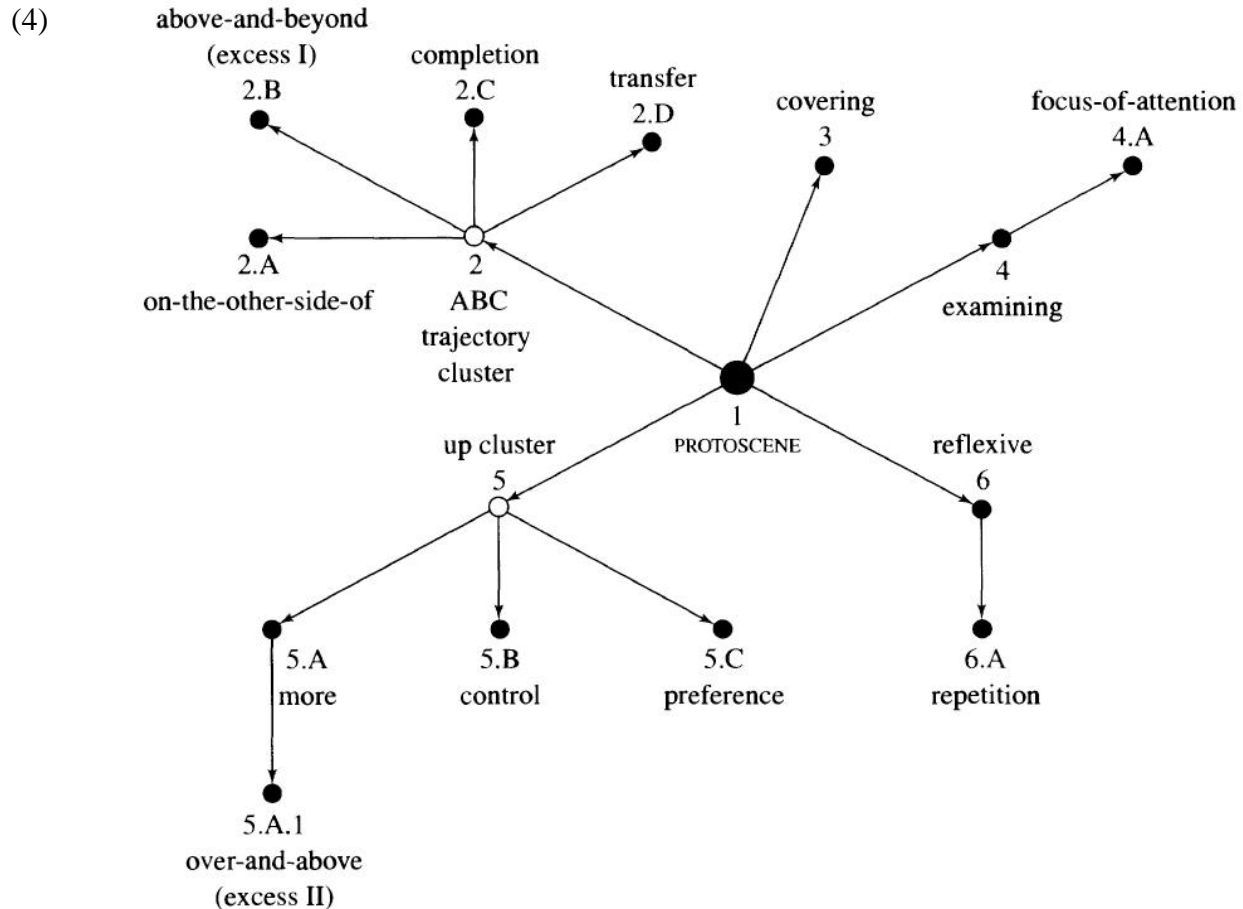
Crucially, the domains of color, body parts, and kinship come with geometric notions of distance and "betweenness" even before we look at the lexicon, and we can study whether and how this prior geometry influences the structure of the lexicon. This does not mean that the right or the only geometry for understanding semantic patterns easily presents itself. For example, the anatomical distance between fingers and toes does not explain why languages can sometimes use the same word for both, indicating that the conceptual space of the human body is more than just the "anatomical space". It also takes into account anatomical similarities that exist between different body parts. In the same way, "kinship space" might not be simply a genealogical tree structure but a space defined over such dimensions as generation, gender, and collateral distance.

There are also examples, from both formal semantics and cognitive semantics, of conceptual spaces constructed on the basis of intensive semantic study of one particular item and motivated semantically. In their study of the polysemy of the reciprocal *each other*, Dalrymple et al. (1998:188) develop a structure of formally defined meanings ranging from the strongest meaning ("each the other") to increasingly weaker meanings:



The arrows represent implicational relations between meanings. Both the meanings as well as their relations are defined on semantic grounds in a formal set-theoretical model, not by comparing the polysemies of reciprocal expressions in different languages.

The network for *over* (Lakoff 1987, Tyler and Evans 2001 and many others) is in many respects very different from the reciprocal lattice above, but it is also an example of a conceptual space that is not derived from a lexical matrix. Rather, it is constructed on the basis of semantic considerations internal to English, these being related to the nature of the image schemas involved and the metaphorical or metonymical transformations between them. This network developed for *over* formed the basis of studies of similar items in languages like Dutch, French, and German, showing different ways in which languages carve up a network of meanings. The following figure, taken from Tyler and Evans (2001:746), shows how a conceptual space looks that is motivated on cognitive semantic grounds, based on the empirical study of English only.



A network like this can be applied to languages other than English to study how they distribute these meanings across different items. We can then ask to what extent these languages respect the same prototypical core meaning and where lexical boundaries are located. Of course, the whole network might be misconstrued in the first place, lacking proper motivation for what the central meaning is and how the other meanings are related to it. The point is that, insofar as we accept this as a valid representation of how meanings hang together, there is already some sort of conceptual space before we start looking at cross-linguistic lexical variation.

We have seen two opposite approaches to conceptual space geometry now, but it is important to point out that I see them as sharing at least one crucial assumption, an assumption that is questioned by some authors (e.g. Janda forthcoming). The assumption is that for a particular

domain there is one universal conceptual space which is somehow valid for all natural languages. Haspelmath's indefinite pronoun space in (1) is a space in which all languages necessarily locate their indefinite pronouns. It simply does not leave open the option that there are languages which map their pronouns to a different space with different meanings or differently organized meanings. In color terminology research, languages are also compared on the basis of one and the same space of colors. Languages can only differ in the way they organize this color space, not in the color spaces themselves, even if they make only very few distinctions. In other words: languages can differ in their semantic maps, not in their conceptual spaces.

It is possible to conceive of a different setup in which each language has its own conceptual space for a particular domain. Janda suggests that a language without gender distinctions in its pronominal system (like Finnish) has a "flat gender landscape" (i.e. conceptual gender space) in contrast to languages with gender distinctions. In this case there is no distinction between a language-specific semantic map and universal conceptual space. Each language has its own specific conceptual spatialization of a particular domain, and we need special mappings between conceptual spaces to see how similar or different languages are. Obviously, linguistic comparison becomes a much more difficult job under these assumptions. In the semantic map approach (whether space-driven or matrix-driven), comparison is possible exactly because languages share the same conceptual space (either *a priori* or *a posteriori*). I take this to be a *methodological* assumption rather than an *ontological* and *cognitive* one. It could very well be that we ultimately need to reinterpret each language-specific semantic map as reflecting the conceptual space of that particular language, merging meanings that are never distinguished by that language. However, for the purposes of this paper I will leave the universalist assumption of conceptual spaces for what it is. The focus here is on the distinction between the two directions of analysis.

It is also important to stress that even though both approaches seem to work in opposite directions, it is not the case that the matrix-driven approach is purely data-driven, inductive, *a posteriori*, and empirical while the space-driven approach is theory-driven, deductive, and *a priori*. As always, there is a combination of theoretical assumptions and empirical data. For this paper, the crucial difference lies in the way *relations* between meanings are treated: as derived from semantic considerations or from cross-linguistic data.

I will first discuss some problems with the space-driven approach that have partially motivated the matrix-driven approach, the latter being characteristic for much semantic map work. After that I will demonstrate that a purely matrix-driven approach raises some important questions, strongly suggesting that we need both approaches to complement each other.

3. Problems with a Space-Driven Approach

In a sense, the domains of color, body, and kinship are easy examples of conceptual spaces because they carry much of their structure on their sleeves. The problem is that for many (especially more abstract) domains it is not at all easy to find an *a priori* conceptual geometry. Consider the graph in (1). Even though a lot of semantic work has been done in the area of reference, quantification, questions, negation, polarity, and modality, the body of insight does not yet straightforwardly deliver us a network of meaning relations comparable to (1) purely on the basis of what we know about the meanings themselves. This is true for many of the conceptual spaces that semantic map typologists have worked on in relation to case, aspect, tense, modality, and evidentiality. It is often very hard to come up with a unique structure of meanings for a

particular domain motivated on semantic grounds. Existing theories conflict with each other, or they offer only a partial view. The word *over* is a typical case. There is disagreement among various authors about the way the network for *over* should be organized, what its focal meaning is, and how the various meanings are related, leading to a still growing body of publications on the subject ever since Brugman's original work (Brugman 1988, Lakoff 1987, Dewell 1994, Sandra and Rice 1995, Tyler and Evans 2001 only being some of the publications on this word). In the absence of strong independent semantic evidence for structuring a domain in a particular way, it is natural that in such a situation we would turn to cross-linguistic data and let those data (i.e. the lexical matrix) tell us what the underlying conceptual structure is. This is what motivates the semantic map approach.

Another problem with the space-driven approach is that an *a priori* conceptual geometry might actually bias our research in a particular way and hinder us from finding patterns and dimensions in other languages. It is all too easy to assume that we have a universally valid structure, based on one language (typically English), while the richness of a wider variety of languages does not really fit on the map. This is where the matrix-driven approach has an important heuristic value. It doesn't fix itself to any specific assumptions about sense relations, what the dimensions are of a semantic space, or where the core meanings are—all of this based on studying a single language. Instead it aims at *discovering* these aspects for a particular domain from what many different languages tell us. This heuristic advantage is also strongly connected to the *visualization* and *spatialization* aspect of the semantic map approach. It is possible to view a semantic map as offering just one particular spatialization of the data among many different options, helping the analyst to find his way. This view is expressed for instance by Wälchli (2007), who emphasizes that there “are always different possible ways of analysis, each with its particular advantages and disadvantages. Semantic maps will thus never reflect *the* semantic space, if there is such a thing at all.” (Wälchli 2007:47, see Cysouw 2007 for similar remarks).

There are other problems with the space-driven approach in general and with specific instantiations of it, which have led to a matrix-driven approach. However, I would now like to turn to some considerations that show that the matrix-driven approach in its purest form faces some interesting questions. My argumentation is restricted to graph-based semantic maps and the important property of contiguity, but I believe the conclusions are valid for scale-based approaches too in a more general sense that remains to be worked out.

4. Two Problems with a Matrix-Driven Approach

4.1 Exceptions to contiguity

As we saw in section 2.1, there is an important principle in matrix-driven mapping which has been indicated with various terms in the literature: connectivity, contiguity, convexity, coherence, or compactness. Roughly speaking, the idea is that the meanings of a word are always close together in a conceptual space, forming one cluster. In the graph-based approach a word corresponds to a connected subgraph. There are no gaps in a word, and a word is never split into two separate parts located in different corners of the conceptual space. It is this principle of contiguity that allows us to build a conceptual graph or space on the basis of a lexical matrix. As a result, the principle is an implicit part of the procedure for building a conceptual graph or space. This has some important limitations for understanding the principle itself, its nature, and the way it applies.

First, because of its constitutive role in building a space, contiguity cannot be directly tested as a hypothesis about the way words distribute themselves over a conceptual space. Neither does it allow for exceptions. Suppose we have the following very small lexical matrix, with two words, A and B, and the meanings 1, 2, 3:

(5)

	1	2	3
A	✓	✓	
B		✓	✓

Given contiguity, this matrix leads to the following graph:



Suppose now that we discover another word C in some language that has the meanings 1 and 3. The logic of the matrix-driven approach forces us to revise the space in the following way, guaranteeing that all three words now correspond to a connected subgraph:

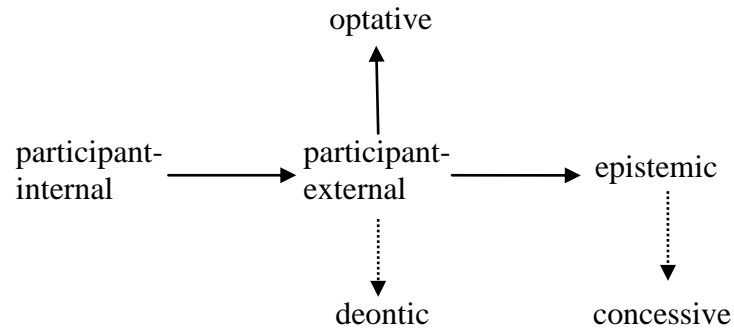


There is no way to treat word C as an *exception* to contiguity, i.e. as a discontinuous word, for whatever reason. Exceptions can't be recognized in the matrix-driven approach.

That this is not an academic example is illustrated by the modality map of van der Auwera and Plungian (1998) and van der Auwera et al. (2009). For the possibility part, the conceptual space corresponding to this map can be represented as follows:¹

¹I have adapted the representation of van der Auwera and Plungian and van der Auwera et al. to make it more similar to Haspelmath's representation. They represent meanings by means of Venn-diagram-like ovals and subtype relations by means of inclusion.

(8)



Van der Auwera's maps are special because they encode the direction of grammaticalization in the map by means of arrows and also allow one modality to be a subtype of another modality (represented here by the dotted arrow). So, concessive modality is treated as an instance of the more general epistemic modality. For extensive motivation and examples I refer the reader to van der Auwera and Plungian (1998) and van der Auwera et al. (2009).

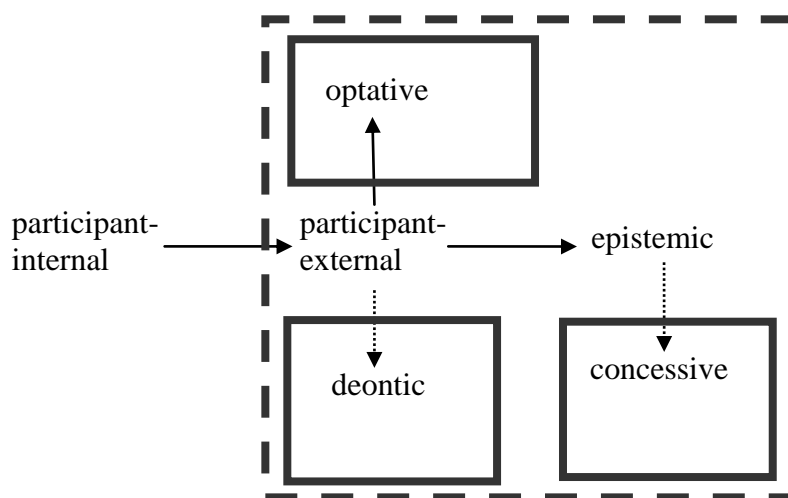
What is important now is that these authors argue that there are examples of discontinuity on the modal map. One example is Dutch *mogen*, which is used for deontic (9a), concessive (9b), and optative (9c), but not for participant-external (9d) and epistemic (9e):²

- (9) a. *Ik mag gaan.*
I may go
'I may go.'
- b. *Hij mag slim zijn, sympathiek is hij niet.*
he may clever be nice is he not
'He may be clever, but he is not nice.'
- c. *Moge hij honderd jaar leven!*
may he hundred year live
'May he live a hundred years!'
- d. * *Om naar het station te gaan, mag je bus 66 nemen.*
to to the station to go may you bus 66 Take
'To get to the station, you may take bus 66.'
- e. * *Hij mag thuis zijn, ik weet het niet.*
he may home be, I know It not
'He may be home, I don't know.'

²Examples taken from van der Auwera et al. (2009:6-7).

When we indicate the meanings of *mogen* on the modal map, we can see that they cover a non-connected area, in fact three separate areas, in contrast to the English *may*, indicated with the dashed line:

(10)



For contiguity to hold, both participant-external and epistemic possibility would also have to be among the meanings of Dutch *mogen*, but they are not. However, both of these *were* meanings of *mogen* in older stages of Dutch, and this is what van der Auwera and co-authors see as the explanation for lack of connectivity: the older meanings that held the area together have disappeared. This is an interesting view, which, if true, leads one to expect that there might be many more instances of disconnectivity, both in the modal domain and in other domains. If older meanings drop out from a word's extension, then what is left might be a discontinuous set of patches in conceptual space.

However, van der Auwera et al. can only follow this line because they don't adhere to a strict matrix-driven approach. If they had followed that approach, then the mere existence of Dutch *mogen* would have led to a network with more lines, connecting deontic, optative, and concessive, ensuring that *mogen* is in fact contiguous. Apparently, they had independent reasons for not wanting to draw those lines, but those reasons don't come from the lexical data; rather, they spring from some sort of semantic (or maybe diachronic) analysis of modal concepts that motivates the lines in (8). A purely matrix-driven approach would not have allowed them to recognize the exceptions.

There might be a way to recognize exceptions in a matrix-driven approach once we start to take into account quantitative data (as argued for in Cysouw 2007). Suppose that the Dutch pattern (having a word for deontic and optative, but not for the intermediate participant-external) is attested only very rarely in languages of the world as opposed to the English pattern. Then we have a statistical cue for exceptionality which we can use to decide not to draw an arc in the graph: the number of attested data is simply below a certain threshold. However, this only works if exceptions to contiguity come in small numbers and if the diachronic phenomenon that van der Auwera et al. suggest is a rare phenomenon. And the only way we can find out is by assessing the structure of conceptual spaces from a *semantic* point of view.

4.3 Contiguity and classical categorization

Let us turn now to another aspect of contiguity: its status as a restrictive but non-classical hypothesis about categorization. In the classical view of categorization (see Margolis and Laurence 1999), a category of objects would be defined by a list of necessary-and-sufficient properties, a checklist of criterial features. One could imagine that this classical view also applies to the category of meanings that corresponds to a multifunctional/polysemous word. In this view, the English indefinite pronoun *somebody* in (2) would cover the meanings “specific known”, “specific unknown”, “irrealis non-specific”, and “question” and “conditional” because these five meanings share one or more semantic features that the other four meanings don’t have (like ASSERTIVE). This corresponds then more or less to the *general-meaning method* discussed in Haspelmath 2003:214). Obviously, in the semantic map method one sees the semantic extension of a word not as classically definable but as a *cluster* category defined by *family resemblances* perhaps around a central, *prototypical* core.³ In this sense, a semantic map can be seen as embodying a non-classical perspective, with contiguity (connectedness, convexity, etc.) as the central constraint on categories.

The question now is whether the contiguity principle really gives us something more than a classical criterial definition, i.e. whether a semantic map allows us to define family resemblance categories that could never have been defined in terms of necessary and sufficient features of meanings. Is it possible to have a conceptual space in which all possible contiguous regions could also have been defined in a classical way? I am going to suggest that such conceptual spaces actually do exist. The only way in which we can demonstrate this is by departing from a strictly matrix-driven approach and rethinking the structure of the space itself.

We return to (part of) the conceptual graph of the modal map (van der Auwera and Plungian 1998, van der Auwera et al. 2009). (11) can be seen as the backbone of their map with the major categories of internal, external, and epistemic modality:⁴

(11)

participant-internal ————— participant-external ————— epistemic

It is also the simplest possible structure with which the semantic map idea can be illustrated. Another example comes from Haspelmath (2003:219), relevant for the use of case markers and adpositions:

(12)

purpose ————— direction ————— recipient

³But note that prototypes are not necessary in most versions of semantic maps, as pointed out in Haspelmath (2003:232).

⁴For a more detailed discussion of the geometry of the modal map, see De Schepper and Zwarts (2009).

Given the contiguity principle, the only categories that are ruled out are those that include the meanings at the end, without the one in the middle, i.e. {internal, epistemic} and {purpose, recipient}.

However, we can also get this result when we decompose the three meanings in both conceptual spaces into features. Following the discussion in van der Auwera and Plungian (1998) we can say that the space in (11) is actually the combination of two groupings: one grouping is internal modality (based on a thematic role assigned to a participant) versus non-internal modality (non-thematic); the other grouping is propositional modality (corresponding to an operator at the level of the propositional, which is the case with epistemic modality) versus non-propositional modality (in which this is not the case). If we now formulate these groupings by means of two binary features THEMATIC and PROPOSITIONAL (completely in the classical, structuralist spirit), we can encode the three modalities as follows, assuming that [+THEMATIC,+PROPOSITIONAL] is ruled out for semantic reasons:

- (13) internal = [+THEMATIC,-PROPOSITIONAL]
 epistemic = [-THEMATIC ,+PROPOSITIONAL]
 external = [-THEMATIC,-PROPOSITIONAL]

Classes of modalities can be defined by leaving out or underspecifying features, in the following way:⁵

- (14) { internal, external, epistemic } = [] or [*u*THEMATIC,*u*PROPOSITIONAL]
 { external, epistemic } = [-THEMATIC] or [-THEMATIC,*u*PROPOSITIONAL]
 { internal, external } = [-PROPOSITIONAL] or [*u*THEMATIC,-PROPOSITIONAL]

Importantly, there is no combination of features to define the non-contiguous category { internal, epistemic }. We can of course say that this category is defined as being *either* thematic *or* propositional, but that introduces a disjunction of features, which goes beyond the classical conception of categorization.

So, if we decompose the meanings of a linear graph into more basic features, then we can use these features in a classical way to define exactly the categories that are connected in the graph. The bottom-line is that such a semantic map only seems to give a visualization of a situation that could already be captured in a classical way. The visualization is based on the idea that an arc is drawn between meanings that differ only in one feature (roughly speaking). In this way, no explanatory role is left for a principle of contiguity itself, i.e. for the idea that the geometrical structure of a conceptual space imposes constraints on the word categories that can be defined over it.

What I am *not* saying is that we can always easily analyze meanings in terms of more basic features or that it makes sense to do so. It is not at all clear that THEMATIC and PROPOSITIONAL are really the right properties for the modal domain. Neither is it immediately obvious what the features should be in (12).⁶ But this is an independent problem concerning the content and nature

⁵This assumes that the meanings themselves correspond to fully specified feature constellations, while classes of meanings correspond to partially or completely underspecified ones. One could imagine that the basic meanings themselves are underspecified for certain properties, but I will not pursue that idea here.

⁶Using the features [ABSTRACT] and [HUMAN], one can analyze the graph in (12) as:

of meanings: features of meanings are often hard to find or to defend, and they might not always be discrete. On the other hand, nobody would want to claim that meanings in conceptual spaces like “epistemic” or “purpose” are in any sense unanalyzable wholes without any internal structure or identifiable properties. So, it makes sense to look at what defines meanings in a conceptual space.

To the extent that we succeed in giving a feature decomposition of the meanings of small linear conceptual spaces like those in (11) and (12), we have to conclude that the principle of contiguity is vacuous. The only family resemblance categories that are defined in terms of connectivity in such a case are the uninteresting, classical ones. In order to determine whether this observation extends to all graph-based semantic maps, we need to be more precise about the way feature structures define conceptual graphs. When we start with a set F of n binary features (i.e. $F = \{f_1, f_2, \dots, f_n\}$), we can define the total set of meanings M as the set that consists of all the feature bundles, i.e.:

$$(15) \quad M = \{[+f_1, +f_2, \dots, +f_n], [-f_1, +f_2, \dots, +f_n], \dots, [-f_1, -f_2, \dots, -f_n]\}$$

A conceptual space will select a subset C of M . This can be a proper subset when not all combinations of features “make sense”, as we saw above for [+THEMATIC, +PROPOSITIONAL]. In order to define the graph for C , we need a notion of distance between meanings m_i and m_j , simply defined as the number of features in which m_i and m_j differ.⁷ The conceptual graph G for the set of meanings C can then be defined in the following way:

$$(16) \quad \text{Two meanings } m_i \text{ and } m_k \text{ in } C \text{ are connected in } G \text{ if and only if the distance between } m_i \text{ and } m_k \text{ is smaller than the summed distance of a sequence of unique meanings } m_1, m_2, \dots, m_{k-1}, m_k \text{ (i.e. than } \sum d(m_i, m_{i+1}) \text{ for every } 1 \leq i < k).$$

What does this mean? Roughly speaking, we draw a line between two meanings only if it is not possible to give them a shorter connection through other meanings. For example, given (13) we don’t draw a line between “internal” and “epistemic” (distance 2) because it is possible to connect these meanings in two steps of distance 1 via “external” (leading to a total distance of 2). In other words, we don’t connect “internal” and “epistemic” because they are both more similar to this third meaning “external” which we want to have in between them.

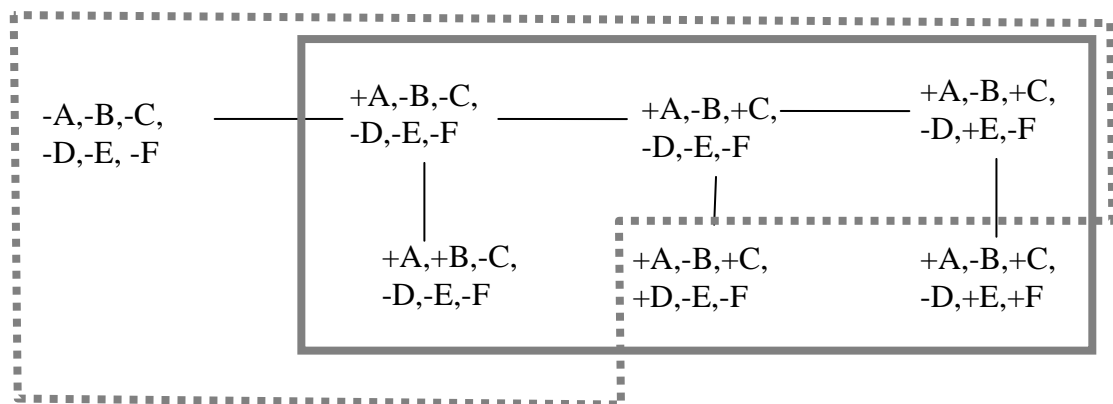
Given this somewhat formal background, we can turn to a more complicated example. Suppose we have the following graph with seven meanings based on six binary features. In this graph, lines are drawn according to the definition given above. Furthermore, two contiguous areas are indicated.

[+ABSTRACT, -HUMAN] ----- [-ABSTRACT, -HUMAN] ----- [-ABSTRACT, +HUMAN]

with the assumption that they are all three part of a more general directional domain, i.e. all have the feature [+DIRECTION].

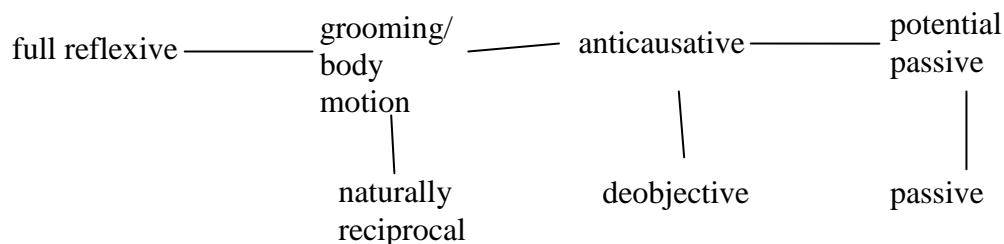
⁷Notice that this notion of distance (based on features in meanings) is different from the notion of distance that we explained in section 2.1 (based on arcs in graphs).

(17)



Even in this more elaborate case we can show that every connected subgraph corresponds to a classical category, i.e. a list of features picking out exactly the nodes of that subgraph. The indicated areas, for instance, correspond to the feature combinations [+A] (with the solid line) and [-D,-F] (with the dashed line). We can conclude then that there are non-trivial semantic maps that can in principle be analyzed in the classical way *if*, that is, we can find the semantic features to analyze the meanings. An example of a semantic map that has exactly the geometry shown in (17) is the map that Haspelmath (2003:225) gives for reflexive and middle functions.

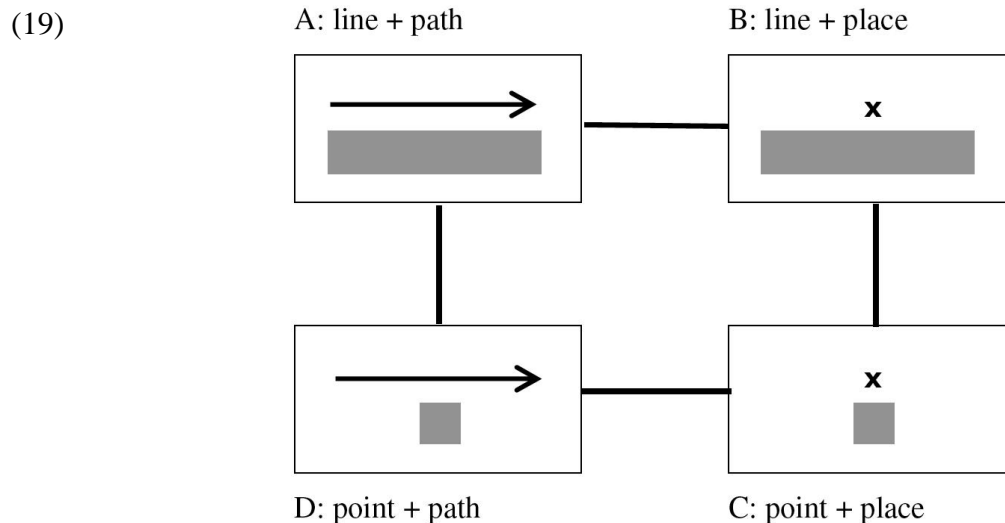
(18)



The areas in (17) correspond to the distribution of French *se* (dashed line) and Russian *-sja* (solid line) in his semantic map. So, the particular map in (18) would in principle lend itself to a classical analysis and hence, contiguity does not necessarily provide us with a “geometric” constraint on categorization.

We only see the extra value of contiguity when we consider graphs with cycles, the smallest non-trivial example of which is a square. To give an example of this, I present here a small example from the spatial domain involving paths and places that English would label with terms like *along*, *by*, *past*, and *beside*. There are four schematic situations involving a *ground* (either “point-like”, 0-dimensional or “line-like”, 1-dimensional) and a figure that is either located at a place near the object or moving along a path near the object (place vs. path). In this way we combine two spatial distinctions that are firmly established in the language and cognition of space (e.g. Talmy 1983, Herskovits 1986, Landau and Jackendoff 1993, Regier 1995, among others). Together these two dimensions define a conceptual space in the form of a square, as

shown in (19). In this conceptual space there are four abstract spatial relations (labeled clockwise from A-D), organized in such a way that relations that share one feature, either on the ground or the figure dimension, are linked by a line in accordance with the definition given in (16) above.



What we have here is a simple geometry that is motivated on the basis of conceptual considerations about figures and grounds although clearly abstracting away from a wide range of phenomena and questions. It might be far too simple and incorrect in certain respects, but it is a valid hypothesis about how these meanings are conceptually organized and one that can lead to clear predictions.

According to the classical theory, there are 9 *natural classes* here as defined by combinations of necessary and sufficient features. In the overview in (20) we find the 9 classes as sets of meanings followed by the features that define them.

- (20) Classically defined classes of meanings
- | | |
|---|--------------|
| {A}: line + path | {A,B}: line |
| {B}: line + place | {B,C}: place |
| {C}: point + place | {C,D}: point |
| {D}: point + path | {A,D}: path |
| {A,B,C,D}: \emptyset (i.e. no features) | |

Notice that in the classical approach certain classes of meanings cannot be defined, such as {A,C} and {A,B,C}.

However, if we use the contiguity principle, we get a different, wider collection of classes, some of which are “unnatural” from the classical point of view (i.e. not definable as a “checklist” of features):

(21) Classes of meanings defined by contiguity

{A}, {B}, {C}, {D}, {A,B}, {B,C}, {C,D}, {A,D}, {A,B,C}, {B,C,D}, {C,D,A},
 {A,B,D}, {A,B,C,D}

Because of contiguity, a class of meanings like {A,B,C} is held together by its family resemblance structure: although meanings A and C do not share any properties, they are taken together in one category because they both share properties with meaning B, the simplest instance of a non-classical family resemblance category. {A,C} is an example of a category ruled out under both perspectives. The question is now whether languages recognize the family resemblance structure here in using the same adposition, adverb or verb, to label such categories in (21). It makes sense to ask this question here in this way because we have defined a conceptual structure for which classical and contiguity-based categorization lead to different predictions.

English already provides us with an example of the second {B,C,D} situation, as shown by the following examples (Anna Asbury, p.c.):

- (22) A *Alex walked along the river.*
 B *Alex stood by/beside the river.*
 C *Alex stood by/beside the tree.*
 D *Alex walked past/by the tree.*

Notice that English uses the preposition/adverb *by* here for the situations B, C, and D. Dutch provides a different example (based on my own intuitions):

- (23) A *Alex liep langs de Rivier.*
 Alex walked along the River
 B *Alex stond langs/aan/bij de rivier.*
 Alex stood along/on/by the River
 C *Alex stond bij de boom.*
 Alex stood by the Tree
 D - *Alex liep langs/voorbij de boom/het kampvuur.*
 Alex walked along/past the tree/the campfire
 - *Alex liep de boom/het kampvuur voorbij.*
 Alex walked the tree/the campfire Past
 - *Alex liep langs*
 Alex walked along

Notice how the word *langs* (related to English *along*) covers the meanings A, B, and D, a connected subgraph of (19), but *not* a classical category. We could of course introduce *ad hoc* features for the categories {A,B,D} and {B,C,D} to allow for trivial classical definitions, but (apart from the fact that these might not in any way be motivated by the properties of the four

meanings themselves), these features can change the geometry of the conceptual space. More specifically, for a square-shaped semantic map, like the one in (19), there is no way to model the effects of contiguity by means of features. This can be seen in the following way. As soon as we introduce a feature f for the situations A, B, and D and a feature g for the situations B, C, and D, the distances between the meanings are redefined, and the principle for building the graph produces more arcs. Two meanings that used to be opposite in the square, namely B and D, are now going to share *two* new properties, namely g and f , which motivates a direct link between them and therefore changes the geometry. Hence, it is not possible to give a feature decomposition for a square-shaped semantic map that can give us the categories which contiguity defines without changing the geometry. So, contiguous categories cannot always be reduced to classical categories. There are many semantic maps that contain squares, like Haspelmath's indefinite pronoun map in (1), where the same reasoning might apply.

What is the difference between the maps in (1) and (19) and the maps in (11) and (18)? I suspect that it involves an important graph-theoretical difference that lies at the root of this: the difference between graphs with cycles and graphs without cycles. A cycle is a sequence of nodes and arcs that allows one to make a complete tour. A graph without cycles is a tree: it branches without ever connecting to itself again. Why and how exactly cyclicity in meaning similarities leads to non-classical categorization (by contiguity) is still unclear to me. Note that the smallest possible cycle (a triangle of meanings, as in (7) above) can be defined in a classical way by means of three features, so it is not only cyclicity that explains it. This must be left for further research.

We can conclude that the notion of contiguity (or, more precisely, connectedness), defines non-classical categories in semantic maps (as long as the underlying conceptual graph has certain properties). Notice that we can only draw this conclusion because we departed from a purely matrix-driven approach and considered what the structure of a conceptual space might be, not derived from the words that are defined over that space but on the basis of the meanings involved. Moreover, the only way in which we can hope to get a better understanding of the relation between cyclicity and contiguity is by taking the space-driven approach.

5. Conclusion: Matrix ↔ Space

We have seen two opposite approaches to the geometry of conceptual spaces underlying semantic maps: the matrix-driven approach (which starts from a set of cross-linguistic data) and the space-driven approach (which starts with a semantic model). In current typological work, the matrix-driven approach seems most popular for understandable reasons (see section 3). However, we should be aware of the fact that a purely matrix-driven approach has its limitations, as I showed in section 4. The matrix-driven approach does not allow us to assess the property of contiguity itself (the possibility of exceptions and its status as a theory of categorization) because contiguity is implicit in the inductive procedure. I have not discussed more specific problems arising with the use of scaling methods that impose a continuous Euclidean structure on all types of conceptual domains. For these I refer to Zwarts (2008).

There is great value in the matrix-driven approach as a heuristic method. Nevertheless, the conceptual spaces that are made, either through discrete or continuous methods, should not be seen as theoretical end points but as a way to help us build semantically-informed models of conceptual spaces and to reveal the limitations of the purely theory-driven *a priori* approach. What we seem to need then, is a closer alliance between the two approaches allowing us to go

back and forth and get a more intensive cross-fertilization of typological and semantic studies. Only in that way can we better understand what the geometric structure of a particular conceptual space is like and how it restricts the way languages across the world structure their grammars and lexicons.

Acknowledgements

This paper was presented at the *Workshop on Semantic Maps: Methods and Applications*, Paris, September 29, 2007. I thank the audience there for useful questions and discussion, as well as Michael Cysouw and one anonymous reviewer for their comments.

References

- Berlin, Brent and Paul Kay. 1969. *Basic Color Terms: Their Universality and Evolution*. Berkeley: University of California Press.
- Brugman, Claudia. 1988. *The story of over: Polysemy, semantics and the structure of the lexicon*. New York: Garland Press.
- Croft, William. 2001. *Radical construction grammar*. Oxford: Oxford University Press.
- Croft, William and Keith T. Poole. 2008. Inferring universals from grammatical variation: Multidimensional scaling for typological analysis. *Theoretical Linguistics* 34/1.1-37
- Cysouw, Michael. 2007. Building semantic maps: The case of person marking. *New challenges in typology*, ed. by Matti Miestamo and Bernhard Wälchli, 225-248. Berlin: Mouton.
- Dalrymple, Mary, M. Kanazawa, Y. Kim, S. Mchombo, and S. Peters. 1998. Reciprocal expressions and the concept of reciprocity. *Linguistics and Philosophy* 21/2.159-210.
- De Schepper, Kees and Joost Zwarts. 2009. Modal geometry: Remarks on the structure of a modal map. *Cross-linguistic semantics of tense, aspect and modality*. ed. by L. Hogeweg, H. De Hoop and A. Malchukov, 245-269. Amsterdam: Benjamins.
- Dewell, Robert. 1994. Over again: Image-schema transformations in semantic analysis. *Cognitive Linguistics* 5.351-380.
- Gärdenfors, Peter. 2000. *Conceptual spaces: The geometry of thought*. Cambridge, MA: MIT Press.
- Greenberg, Joseph H. 1966. Universals of kinship terminology. *Language universals: With special reference to feature hierarchies*, ed. by Joseph Greenberg, 72-87. The Hague: Mouton.
- Haspelmath, Martin. 1997a. *Indefinite pronouns*. Oxford: Clarendon.
- 1997b. *From space to time: Temporal adverbials in the world's languages*. München: Lincom.
- 2003. The geometry of grammatical meaning: Semantic maps and cross-linguistic comparison. *The new psychology of language*, ed. by Michael Tomasello, vol. 2, 211-243. New York: Erlbaum.
- Herskovits, Annette. 1986. *Language and spatial cognition: An interdisciplinary study of the prepositions in English*. Cambridge: Cambridge University Press.
- Janda, Laura A. forthcoming. What is the role of semantic maps in cognitive linguistics? To appear in a festschrift for Barbara Lewandowska-Tomaszczyk, ed. by Piotr Stalmaszczyk and Wieslaw Oleksy.

- Lakoff, George. 1987. *Women, fire and dangerous things: What categories reveal about the mind*. Chicago: University of Chicago Press.
- Landau, Barbara and Ray Jackendoff. 1993. “What” and “where” in spatial language and spatial cognition. *Behavioral and Brain Sciences* 16.217-265.
- Levinson, Stephen and Sergio Meira. 2003. ‘Natural concepts’ in the spatial topological domain – Adpositional meanings in crosslinguistic perspective: An exercise in semantic typology. *Language* 79/3.485-516.
- Majid, Asifa, Melissa Bowerman, Miriam van Staden and James S. Boster. 2007. The semantics of “cutting and breaking” events: A cross-linguistic perspective. *Cognitive Linguistics* 18/2.133-152.
- Margolis, Eric and Stephen Laurence. 1999. *Concepts: Core readings*. Cambridge, MA: MIT Press.
- Regier, Terry. 1995. A model of the human capacity for categorizing spatial relations. *Cognitive Linguistics* 6/1.63-88.
- Regier, Terry, Paul Kay and Naveen Khetarpal. 2007. Color naming reflects optimal partition of color space. *Proceedings of the National Academy of Sciences* 104/4.1436-1441.
- Sandra, Dominiek and Sally Rice. 1995. Network analyses of prepositional meaning: Mirroring whose mind–The linguist’s or the language user’s? *Cognitive Linguistics* 6.89-130.
- Talmy, Leonard. 1983. How language structures space. *Spatial orientation: Theory, research, and application*, ed. by H. Pick and L. Acredolo, 225-282. New York: Plenum Press.
- Tyler, Andrea and Vyvyan Evans. 2001. Reconsidering prepositional polysemy networks: The case of over. *Language* 77/4.724-765.
- van der Auwera, Johan and Plungian, V.A. 1998. Modality’s semantic map. *Linguistic Typology*, 2/1.79-124.
- van der Auwera, Johan, Peter Kehayov and A. Vittrant. 2009. Acquisitive modals. *Cross-linguistic semantics of tense, aspect and modality*. ed. by L. Hogeweg, H. De Hoop and A. Malchukov, 271-302. Amsterdam: Benjamins.
- Wälchli, Bernhard. 2007. *Constructing semantic maps from parallel text data*. Unpublished manuscript, Universität Konstanz.
- Zwarts, Joost. 2008. Commentary on Croft and Poole, ‘Inferring universals from grammatical variation: multidimensional scaling for typological analysis’. *Theoretical Linguistics* 34/1.67-73.

Author’s contact information:

Joost Zwarts

Opleiding Taalwetenschap

Departement Moderne Talen

Faculteit Geesteswetenschappen

Universiteit Utrecht

Trans 10

3512 JK Utrecht

The Netherlands

j.zwarts@uu.nl